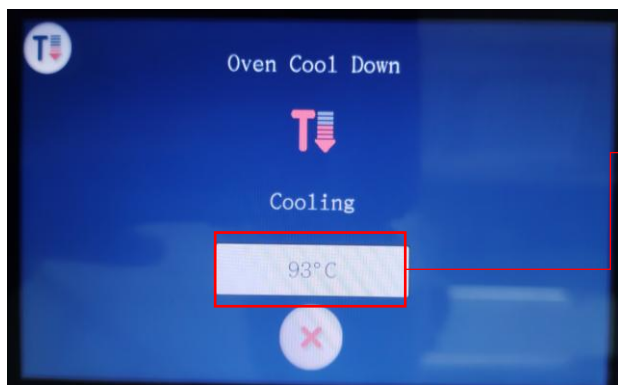


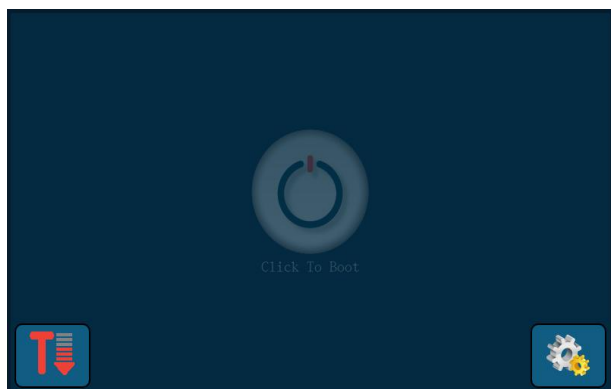
Daily Cleaning Procedure Of Speed Oven



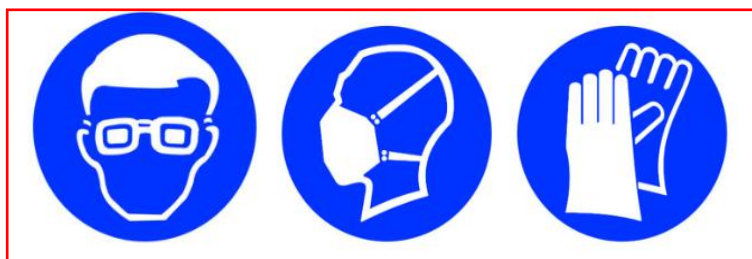
Press the power icon for 3 seconds, your oven automatically enters cool-down mode



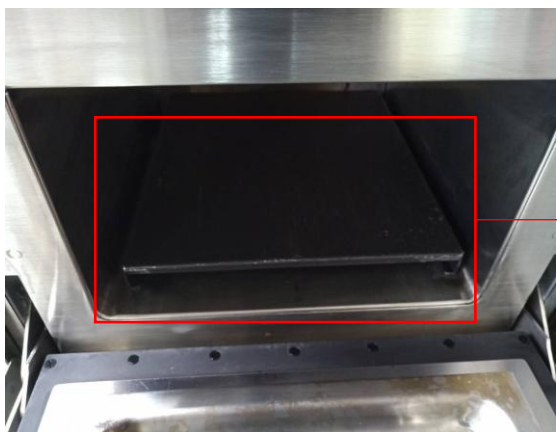
It starts to cool down automatically, the current temperature of oven is displayed here (you can also click here to customize a cool-down temperature)



When automatic cooling is completed, oven enters the standby state



Wear protective gears



Take out the inner food shelf (please note that there is still a certain amount of residual heat after cooling)



The inner food shelf should be wiped with a damp towel (do not use corrosive cleanser or steel wool to wipe)



Please use the special cleanser for the oven or the cleanser approved by the factory



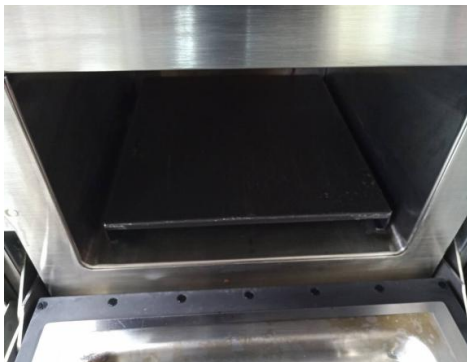
Spray on the stain and leave it for five minutes



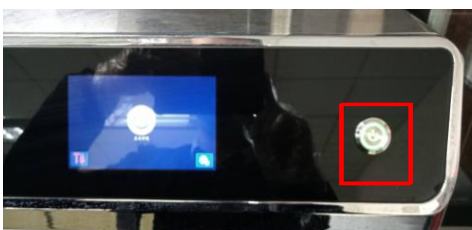
If there is stubborn stains, wipe it with a scouring pad



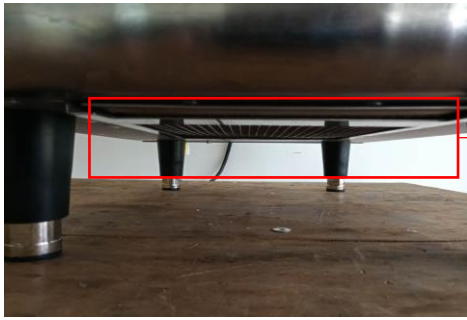
Wipe with a wet towel after cleaning
(make sure there is no detergent residue)



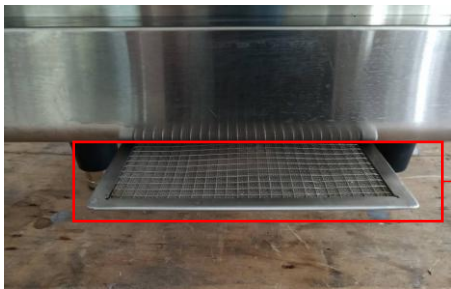
Put the inner food shlef back after cleaning



Power off the device



Take out the filter from the bottom of your oven (make sure to operate after turning off the oven power)



Pull out



Gently tap to remove dust and stains after taking it out



You can also use a soft brush to brush lightly



Put it back after cleaning