



• <b>Work tables</b>	<b>156-179</b>
– Standard Series	156-173
– Central work tables	158-160
– Central pass-through work tables	161
– Central tables with sliding doors	163-164
– Wall work tables	164-167
– Wall work tables without doors	168
– Wall work tables with 2 drawers	169
– Wall work tables with sliding doors	169
– Wall work tables with doors and two drawers	1670
– Wall work tables with waste bin	171
• <b>Wall-hung work tables</b>	
– Wall-hung corner tables	171
• <b>Corner work tables</b>	
– Corner 90° work tables wall-hung	173
– Corner 90° work tables	173
– Corner 90° work tables with doors	173
• <b>Wall work tables with sink</b>	<b>174</b>
• <b>Preparation tables for vegetables, meat and fish</b>	<b>175</b>
• <b>Hot tables</b>	<b>176</b>
• <b>Overshelves with light and heat</b>	<b>178</b>
• <b>Neutral overshelves</b>	<b>179</b>
• <b>Neutral cabinets</b>	<b>180-183</b>
– Standard Series	179
– Wall cabinets	182
– Open wall cabinets	182
– Corner wall cabinets	182
– Standalone cabinets	183
– Cleaning storage cabinets	183



# CENTRAL WORK TABLES

## 600 - 700 RANGE



**Assembled**  
*With undershelf*  
P. 158



**Assembled**  
*Without undershelf*  
P. 159



**Assembled**  
*With cross bracing*  
P. 160



**Sides & Rear enclosed**  
*With middle shelf  
height adjustable*  
P. 161



**Sides Enclosed**  
*With middle shelf  
height adjustable*  
P.162



**Doors in front**  
*Rear closed - Assembled*  
P. 163



**Doors Pass-through**  
*Sliding doors*  
P. 164

### SPECIAL WORKS TABLES 600 MM &700 MM



**Wall-Hung work tables**  
P. 172



**Corner work tables**  
P. 173



# WALL WORK TABLES

## 600 - 700 RANGE



**Assembled**  
*With undershelf*  
P. 165



**Assembled**  
*Without undershelf*  
P. 166



**Assembled**  
*With cross bracing*  
P. 167



**Sides & Rear enclosed**  
*With middle shelf adjustable*  
P. 166



**Sides Enclosed**  
*With 2 drawers*  
P. 169



**Doors in front**  
*Rear closed - Assembled*  
P. 170



**Doors and drawers**  
*With 2 drawers*  
P. 171

### SPECIAL WORKS TABLES 600 MM & 700 MM



**Table with sink**  
P. 174



**Preparation tables**  
P. 175



**Wall Hot tables**  
P. 176



**Accessories**  
P. 178



# WORK TABLES

## Standard Series

### Work tables Standard Series

Work tables are designed to match perfectly with the rest of Edesa stainless steel equipment, whether are neutral, hot or cold elements. Edesa always ensures that dimensions across its wide range of products are the same, from work table height to backsplash size, including undershelf distance to the floor. Last but not least, **Edesa work tables are designed to get the most out of the professional kitchens**, thanks to its flexibility in products and sizes which adapt to any kind of needs and spaces.

### Strength and durability

Edesa standard series work tables offer large, spacious work surfaces, renowned by their durability and strength that truly make them one of the strongest and toughest products of this kind in the market. To ensure product quality, all work tables are tested before delivery.

Heavy weights are placed on the worktops and shelves, in order to check their stability, strength and flatness. Doors are also opened and closed many times, in order to replicate the professional kitchen working environment.



Quality solutions for professional catering preparation



## Main Features in open work tables

### Backsplash

100x15mm fully welded with round edges.

### Table

Supplied totally assembled.

### Front worktop

Manufactured in 50mm height.

### Undershelf

Strength construction totally welded.

### Profile

40 x 40mm

### Legs

Adjustable in height





# Functional spaces

## Main Features in work tables with doors

### Front worktop

Manufactured in 50mm height.

### Middle Shelf

High storage capacity. Adjustable in height.

### Doors

Designed to simplify cleaning operations to ensure hygiene.



### Table

Can be supplied with doors, pass-through (doors on both sides), rear and side closed (without doors).

### Sides and rear

Closed with panels welded to the structure. All manufactured in Stainless Steel.

### Handles

Built-in in the side of the doors.



## Work tables Central work tables assembled with undershelf



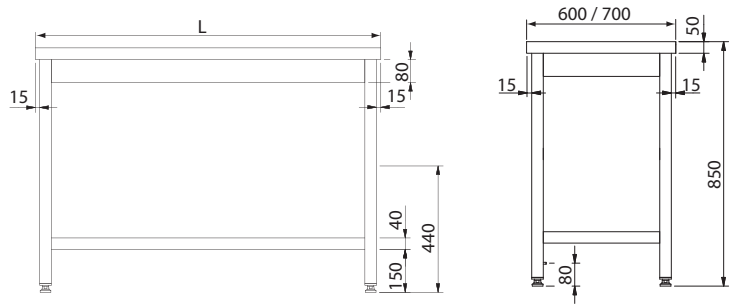
CT-66 S



### CENTRAL WORK TABLES ASSEMBLED WITH UNDERSHELF

- Tables with undershelf welded in the bottom.
- Made of stainless steel, shiny finishing and completely assembled.
- Table frame ensures excellent stability when working on its 50 mm height worktop front, with rounded edges.
- Solid and sturdy structure.
- Stainless steel legs, with adjustable working height.
- From 2100 mm length tables have 6 legs.
- As optional overshelves in neutral, with light or with light and heat are available

### Dimensions



### 600 MM ASSEMBLED

Length (mm)	Model	Reference
600	CT-66 S	19019110
700	CT-76 S	19019111
800	CT-86 S	19019112
900	CT-96 S	19019113
1000	CT-106 S	19019114
1100	CT-116 S	19019115
1200	CT-126 S	19019116
1300	CT-136 S	19019117
1400	CT-146 S	19019118
1500	CT-156 S	19019119
1600	CT-166 S	19019120
1700	CT-176 S	19019121
1800	CT-186 S	19019122
1900	CT-196 S	19019123
2000	CT-206 S	19019124
2100 *	CT-216 S	19019125
2200 *	CT-226 S	19019126
2300 *	CT-236 S	19019127
2400 *	CT-246 S	19019128
2500 *	CT-256 S	19019129
2600 *	CT-266 S	19019130
2700 *	CT-276 S	19019131
2800 *	CT-286 S	19019132

\*Tables supplied with 6 legs

### 700 MM ASSEMBLED

Length (mm)	Model	Reference
600	CT-67 S	19019133
700	CT-77 S	19019134
800	CT-87 S	19019135
900	CT-97 S	19019136
1000	CT-107 S	19019137
1100	CT-117 S	19019138
1200	CT-127 S	19019139
1300	CT-137 S	19019140
1400	CT-147 S	19019141
1500	CT-157 S	19019142
1600	CT-167 S	19019143
1700	CT-177 S	19019144
1800	CT-187 S	19019145
1900	CT-197 S	19019146
2000	CT-207 S	19019147
2100 *	CT-217 S	19019148
2200 *	CT-227 S	19019149
2300 *	CT-237 S	19019150
2400 *	CT-247 S	19019151
2500 *	CT-257 S	19019152
2600 *	CT-267 S	19019153
2700 *	CT-277 S	19019154
2800 *	CT-287 S	19019155

\*Tables supplied with 6 legs

### ACCESORIES FOR TABLES



Neutral overshelves  
300 or 400 mm width  
Pages 178-179



Overshelves with light and heat  
300 or 400 mm width  
Pages 178-179

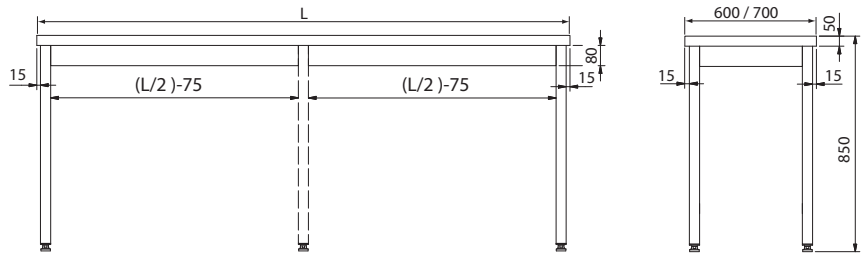


### CENTRAL WORK TABLES

- Made of stainless steel, shiny finishing and completely assembled.
- Worktop table designed to ensure excellent stability when working on it.
- Table frame that ensures excellent stability when working on its 50 mm height worktop front, with rounded edges.
- Solid and sturdy structure.
- Stainless steel legs with adjustable working height.
- From 2100 mm long tables have 6 legs.
- As optional overshelves in neutral, with light or with light and heat are available



### Dimensions



### 600 MM ASSEMBLED

Length (mm)	Model	Reference
600	CT-66	19019156
700	CT-76	19019157
800	CT-86	19019158
900	CT-96	19019159
1000	CT-106	19019160
1100	CT-116	19019161
1200	CT-126	19019162
1300	CT-136	19019163
1400	CT-146	19019164
1500	CT-156	19019165
1600	CT-166	19019166
1700	CT-176	19019167
1800	CT-186	19019168
1900	CT-196	19019169
2000	CT-206	19019170
2100 *	CT-216	19019171
2200 *	CT-226	19019172
2300 *	CT-236	19019173
2400 *	CT-246	19019174
2500 *	CT-256	19019175
2600 *	CT-266	19019176
2700 *	CT-276	19019177
2800 *	CT-286	19019178

\*Tables supplied with 6 legs

### 700 MM ASSEMBLED

Length (mm)	Model	Reference
600	CT-67	19019179
700	CT-77	19019180
800	CT-87	19019181
900	CT-97	19019182
1000	CT-107	19019183
1100	CT-117	19019184
1200	CT-127	19019185
1300	CT-137	19019186
1400	CT-147	19019187
1500	CT-157	19019188
1600	CT-167	19019189
1700	CT-177	19019190
1800	CT-187	19019191
1900	CT-197	19019192
2000	CT-207	19019193
2100 *	CT-217	19019194
2200 *	CT-227	19019195
2300 *	CT-237	19019196
2400 *	CT-247	19019197
2500 *	CT-257	19019198
2600 *	CT-267	19019199
2700 *	CT-277	19019200
2800 *	CT-287	19019201

\*Tables supplied with 6 legs

### ACCESORIES FOR TABLES



Neutral overshelves  
300 or 400 mm width  
Pages 178-179



Overshelves with light and heat  
300 or 400 mm width  
Pages 178-179



## Work tables Central work tables with cross bracing



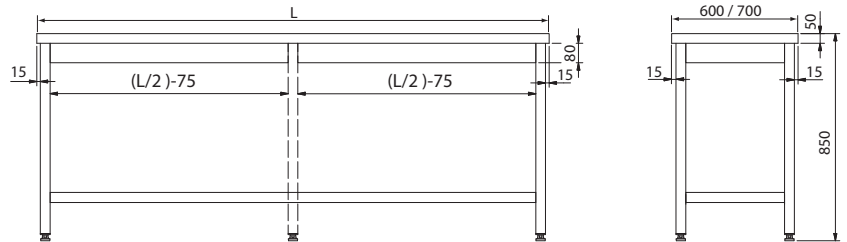
CT-126 B

### CENTRAL WORK TABLES WITH CROSS BRACING

- Made of stainless steel, shiny finishing and completely assembled.
- Worktop table designed to ensure excellent stability when working on it.
- The cross bracing at the bottom increases the stability of the table, keeping available all the space below the worktop for placing waste bin or other auxiliary furniture.
- Table frame that ensures excellent stability when working on its 50 mm height worktop front, with rounded edges.
- Solid and sturdy structure.
- Stainless steel legs with adjustable working height.
- From 2100 mm long tables have 6 legs.
- As optional overshelves in neutral, with light or with light and heat are available.



### Dimensions



### 600 MM ASSEMBLED

Length (mm)	Model	Reference
600	CT-66 B	19019202
700	CT-76 B	19019203
800	CT-86 B	19019204
900	CT-96 B	19019205
1000	CT-106 B	19019206
1100	CT-116 B	19019207
1200	CT-126 B	19019208
1300	CT-136 B	19019209
1400	CT-146 B	19019210
1500	CT-156 B	19019211
1600	CT-166 B	19019212
1700	CT-176 B	19019213
1800	CT-186 B	19019214
1900	CT-196 B	19019215
2000	CT-206 B	19019216
2100 *	CT-216 B	19019217
2200 *	CT-226 B	19019218
2300 *	CT-236 B	19019219
2400 *	CT-246 B	19019220
2500 *	CT-256 B	19019221
2600 *	CT-266 B	19019222
2700 *	CT-276 B	19019223
2800 *	CT-286 B	19019224

\*Tables supplied with 6 legs

### 700 MM ASSEMBLED

Length (mm)	Model	Reference
600	CT-67 B	19019225
700	CT-77 B	19019226
800	CT-87 B	19019227
900	CT-97 B	19019228
1000	CT-107 B	19019229
1100	CT-117 B	19019230
1200	CT-127 B	19019231
1300	CT-137 B	19019232
1400	CT-147 B	19019233
1500	CT-157 B	19019234
1600	CT-167 B	19019235
1700	CT-177 B	19019236
1800	CT-187 B	19019237
1900	CT-197 B	19019238
2000	CT-207 B	19019239
2100 *	CT-217 B	19019240
2200 *	CT-227 B	19019241
2300 *	CT-237 B	19019242
2400 *	CT-247 B	19019243
2500 *	CT-257 B	19019244
2600 *	CT-267 B	19019245
2700 *	CT-277 B	19019246
2800 *	CT-287 B	19019247

\*Tables supplied with 6 legs

## ACCESORIES FOR TABLES



Neutral overshelves  
300 or 400 mm width  
Pages 178-179



Overshelves with light and heat  
300 or 400 mm width  
Pages 178-179





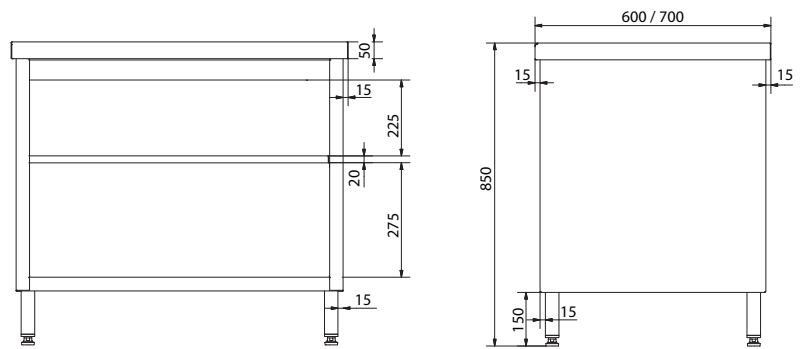
### CENTRAL WORK TABLES ENCLOSED

- Enclosed structure in sides and rear completely welded.
- Table frame that ensures excellent stability when working on it.
- 50 mm height worktop front, with rounded edges.
- Intermediate flat undershelf with folded front, adjustable in height and with longitudinal stainless-steel reinforcement at the bottom.
- Made of stainless steel, shiny finishing.
- 40 x 40 mm stainless steel tubular legs, with adjustable working height.

CM-126



### Dimensions



### 600 MM ASSEMBLED

Length (mm)	Model	Reference
600	CM-66	19019248
700	CM-76	19019249
800	CM-86	19019250
900	CM-96	19019251
1000	CM-106	19019252
1100	CM-116	19019253
1200	CM-126	19019254
1300	CM-136	19019255
1400	CM-146	19019256
1500	CM-156	19019257
1600	CM-166	19019258

### 700 MM ASSEMBLED

Length (mm)	Model	Reference
600	CM-67	19019259
700	CM-77	19019260
800	CM-87	19019261
900	CM-97	19019262
1000	CM-107	19019263
1100	CM-117	19019264
1200	CM-127	19019265
1300	CM-137	19019266
1400	CM-147	19019267
1500	CM-157	19019268
1600	CM-167	19019269

### ACCESORIES FOR TABLES



Neutral overshelves  
300 or 400 mm width  
Pages 178-179



Overshelves with light and heat  
300 or 400 mm width  
Pages 178-179



## Work tables

### Central pass-through work tables

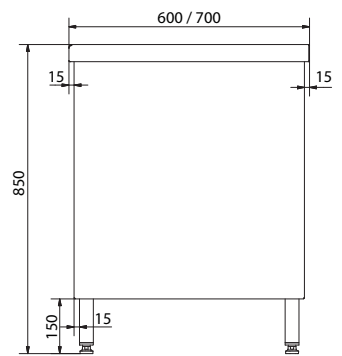
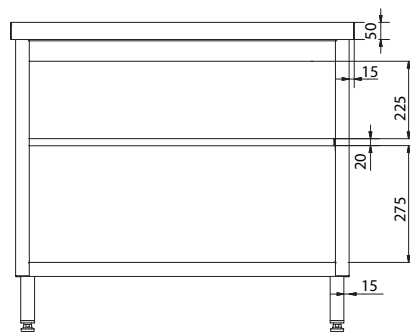


CM-126 O

#### CENTRAL PASS-THROUGH WORK TABLES

- Enclosed structure in sides completely welded.
- Made of stainless steel, shiny finishing.
- Table frame that ensures excellent stability when working on its 50 mm height worktop front, with rounded edges.
- Intermediate flat undershelf with folded front, adjustable in height and with longitudinal stainless-steel reinforcement at the bottom.
- 40 x 40 mm stainless steel tubular legs, with adjustable working height.

#### Dimensions



#### 600 MM ASSEMBLED

Length (mm)	Model	Reference
800	CM-86 O	19019270
1000	CM-106 O	19019271
1200	CM-126 O	19019272
1400	CM-146 O	19019273
1600	CM-166 O	19019274
1800	CM-186 O	19019275
2000	CM-206 O	19019276
2200	CM-226 O	19019277
2400	CM-246 O	19019278
2600	CM-266 O	19019279
2800	CM-286 O	19019280

#### 700 MM ASSEMBLED

Length (mm)	Model	Reference
800	CM-87 O	19019281
1000	CM-107 O	19019282
1200	CM-127 O	19019283
1400	CM-147 O	19019284
1600	CM-167 O	19019285
1800	CM-187 O	19019286
2000	CM-207 O	19019287
2200	CM-227 O	19019288
2400	CM-247 O	19019289
2600	CM-267 O	19019290
2800	CM-287 O	19019291

## ACCESSORIES FOR TABLES



Neutral overshelves  
300 or 400 mm width  
Pages 178-179



Overshelves with light and heat  
300 or 400 mm width  
Pages 178-179

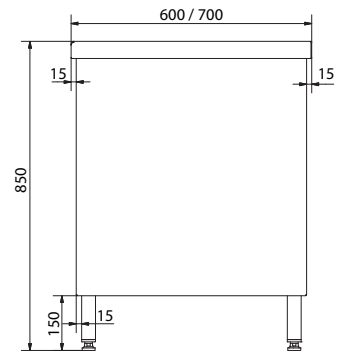
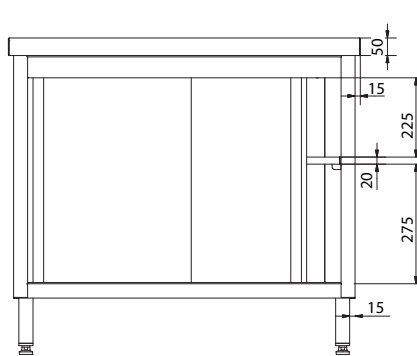


### CENTRAL WORK TABLES WITH DOORS

- Enclosed structure, welded, with sliding doors.
- Two sliding doors made of stainless steel, with integrated full-length handle running the entire height of the door for easy access
- Made of stainless steel, shiny finishing completely assembled.
- Table frame that ensures excellent stability when working on its 50 mm height worktop front, with rounded edges.
- Sliding door system with upper roller and bottom guide track under the shelf.
- Easy to clean, prevents waste and dirt build-up.
- Intermediate flat undershelf with a folded front, adjustable in height and with longitudinal stainless-steel reinforcement at the bottom.
- 40 x 40 mm stainless steel tubular legs, with adjustable working height.

CM-116 SD

### Dimensions



### 600 MM ASSEMBLED

Length (mm)	Model	Reference	Type of doors
800	CM-86 SD	19019292	Sliding door
	CM-86 HD	19019293	Hinged door
900	CM-96 SD	19019294	Sliding door
1000	CM-106 SD	19019295	Sliding door
1100	CM-116 SD	19019296	Sliding door
1200	CM-126 SD	19019297	Sliding door
	CM-126 HD	19019298	Hinged door
1300	CM-136 SD	19019299	Sliding door
1400	CM-146 SD	19019300	Sliding door
1500	CM-156 SD	19019301	Sliding door
1600	CM-166 SD	19019302	Sliding door
1700	CM-176 SD	19019303	Sliding door
1800	CM-186 SD	19019304	Sliding door
1900	CM-196 SD	19019305	Sliding door
2000	CM-206 SD	19019306	Sliding door
2400	CM-246 SD	19019307	Sliding door

### 700 MM ASSEMBLED

Length (mm)	Model	Reference	Type of doors
800	CM-87 SD	19019308	Sliding door
	CM-87 HD	19019309	Hinged door
900	CM-97 SD	19019310	Sliding door
1000	CM-107 SD	19019311	Sliding door
1100	CM-117 SD	19019312	Sliding door
1200	CM-127 SD	19019313	Sliding door
	CM-127 HD	19019314	Hinged door
1300	CM-137 SD	19019315	Sliding door
1400	CM-147 SD	19019316	Sliding door
1500	CM-157 SD	19019317	Sliding door
1600	CM-167 SD	19019318	Sliding door
1700	CM-177 SD	19019319	Sliding door
1800	CM-187 SD	19019320	Sliding door
1900	CM-197 SD	19019321	Sliding door
2000	CM-207 SD	19019322	Sliding door
2400	CM-247 SD	19019323	Sliding door

### ACCESORIES FOR TABLES



Neutral overshelves  
300 or 400 mm width  
Pages 178-179



Overshelves with light and heat  
300 or 400 mm width  
Pages 178-179



## Work tables

### Central pass-through work tables with doors

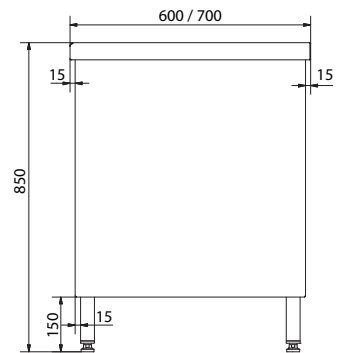
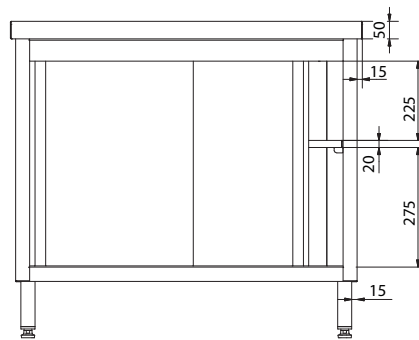


#### CENTRAL PASS-THROUGH WORK TABLES WITH DOORS.

- Enclosed structure, welded, with sliding doors.
- Sliding doors made of stainless steel, with integrated full-length handle running the entire height of the door for easy access.
- Table frame that ensures excellent stability when working on its 50 mm height worktop front, with rounded edges.
- Sliding door system with upper roller and bottom guide track under the shelf.
- Easy to clean, prevents waste and dirt build-up. Door locking device included.
- Intermediate flat undershelf with a folded front, adjustable in height and with longitudinal stainless-steel reinforcement at the bottom.
- Made of stainless steel, shiny finishing completely assembled.
- 40 x 40 mm stainless steel tubular legs, with adjustable working height.

CM-126 2SD

#### Dimensions



#### 600 MM ASSEMBLED

Length (mm)	Model	Reference
600	CM-86 2SD	19019324
700	CM-106 2SD	19019325
800	CM-126 2SD	19019326
900	CM-146 2SD	19019327
1000	CM-166 2SD	19019328
1100	CM-186 2SD	19019329
1200	CM-206 2SD	19019330
1300	CM-226 2SD	19019331
1400	CM-246 2SD	19019332
1500	CM-266 2SD	19019333
1600	CM-286 2SD	19019334

#### 700 MM ASSEMBLED

Length (mm)	Model	Reference
600	CM-87 2SD	19019335
700	CM-107 2SD	19019336
800	CM-127 2SD	19019337
900	CM-147 2SD	19019338
1000	CM-167 2SD	19019339
1100	CM-187 2SD	19019340
1200	CM-207 2SD	19019341
1300	CM-227 2SD	19019342
1400	CM-247 2SD	19019343
1500	CM-267 2SD	19019344
1600	CM-287 2SD	19019345

## ACCESORIES FOR TABLES



Neutral overshelves  
300 or 400 mm width  
Pages 178-179



Overshelves with light and heat  
300 or 400 mm width  
Pages 178-179

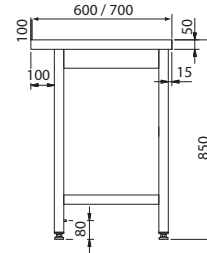
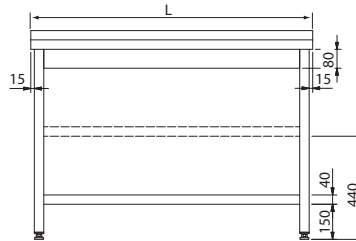


WT-126 S

### WALL WORK TABLES ASSEMBLED WITH UNDERSHELF

- Made of stainless steel, shiny finishing completely assembled.
- 100 x 15 mm backsplash protection, fully welded and with rounded edges.
- Solid and robust structure obtained after installation.
- Table frame that ensures excellent stability when working on its 50 mm height worktop front, with rounded edges.
- From 2100 mm long tables have 6 legs.
- 40 x 40 mm stainless steel tubular legs, with adjustable working height.

### Dimensions



### 600 MM ASSEMBLED

Length (mm)	Model	Reference
600	WT-66 S	19019346
700	WT-76 S	19019347
800	WT-86 S	19019348
900	WT-96 S	19019349
1000	WT-106 S	19019350
1100	WT-116 S	19019351
1200	WT-126 S	19019352
1300	WT-136 S	19019353
1400	WT-146 S	19019354
1500	WT-156 S	19019355
1600	WT-166 S	19019356
1700	WT-176 S	19019357
1800	WT-186 S	19019358
1900	WT-196 S	19019359
2000	WT-206 S	19019360
2100 *	WT-216 S	19019361
2200 *	WT-226 S	19019362
2300 *	WT-236 S	19019363
2400 *	WT-246 S	19019364
2500 *	WT-256 S	19019365
2600 *	WT-266 S	19019366
2700 *	WT-276 S	19019367
2800 *	WT-286 S	19019368

\*Tables supplied with 6 legs

### 700 MM ASSEMBLED

Length (mm)	Model	Reference
600	WT-67 S	19019369
700	WT-77 S	19019370
800	WT-87 S	19019371
900	WT-97 S	19019372
1000	WT-107 S	19019373
1100	WT-117 S	19019374
1200	WT-127 S	19019375
1300	WT-137 S	19019376
1400	WT-147 S	19019377
1500	WT-157 S	19019378
1600	WT-167 S	19019379
1700	WT-177 S	19019380
1800	WT-187 S	19019381
1900	WT-197 S	19019382
2000	WT-207 S	19019383
2100 *	WT-217 S	19019384
2200 *	WT-227 S	19019385
2300 *	WT-237 S	19019386
2400 *	WT-247 S	19019387
2500 *	WT-257 S	19019388
2600 *	WT-267 S	19019389
2700 *	WT-277 S	19019390
2800 *	WT-287 S	19019391

\*Tables supplied with 6 legs

### ACCESORIES FOR TABLES



Neutral overshelves  
300 or 400 mm width  
Pages 178-179



Overshelves with light and heat  
300 or 400 mm width  
Pages 178-179



## Work tables Wall work tables

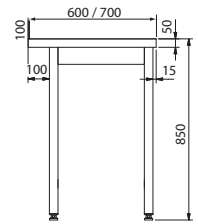
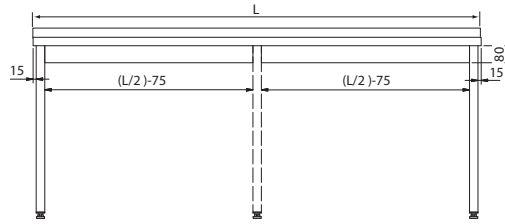


WT-126

### WALL WORK TABLES

- Made of stainless steel, shiny finishing completely assembled.
- 100 x 15 mm backslash protection, fully welded and with rounded edges.
- Table frame that ensures excellent stability when working on its. 50 mm height worktop front, with rounded edges.
- Solid and sturdy structure.
- 40 x 40 mm stainless steel tubular legs, with adjustable working height. From 2100 mm long tables have 6 legs.
- Other available options include overshelves in neutral, with light or with light and heat.

### Dimensions



### 600 MM ASSEMBLED

Length (mm)	Model	Reference
600	WT-66	19019392
700	WT-76	19019393
800	WT-86	19019394
900	WT-96	19019395
1000	WT-106	19019396
1100	WT-116	19019397
1200	WT-126	19019398
1300	WT-136	19019399
1400	WT-146	19019400
1500	WT-156	19019401
1600	WT-166	19019402
1700	WT-176	19019403
1800	WT-186	19019404
1900	WT-196	19019405
2000	WT-206	19019406
2100 *	WT-216	19019407
2200 *	WT-226	19019408
2300 *	WT-236	19019409
2400 *	WT-246	19019410
2500 *	WT-256	19019411
2600 *	WT-266	19019412
2700 *	WT-276	19019413
2800 *	WT-286	19019414

\*Tables supplied with 6 legs

### 700 MM ASSEMBLED

Length (mm)	Model	Reference
600	WT-67	19019415
700	WT-77	19019416
800	WT-87	19019417
900	WT-97	19019418
1000	WT-107	19019419
1100	WT-117	19019420
1200	WT-127	19019421
1300	WT-137	19019422
1400	WT-147	19019423
1500	WT-157	19019424
1600	WT-167	19019425
1700	WT-177	19019426
1800	WT-187	19019427
1900	WT-197	19019428
2000	WT-207	19019429
2100 *	WT-217	19019430
2200 *	WT-227	19019431
2300 *	WT-237	19019432
2400 *	WT-247	19019433
2500 *	WT-257	19019434
2600 *	WT-267	19019435
2700 *	WT-277	19019436
2800 *	WT-287	19019437

\*Tables supplied with 6 legs

### ACCESORIES FOR TABLES



Neutral overshelves  
300 or 400 mm width  
Pages 178-179



Overshelves with light and heat  
300 or 400 mm width  
Pages 178-179



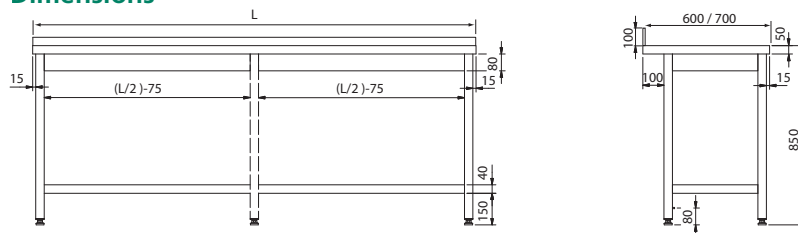
WT-126 B

### WALL WORK TABLES WITH CROSS BRACING

- Made of stainless steel, shiny finishing completely assembled.
- 100 x 15 mm backsplash protection, fully welded and with rounded edges.
- Worktop table designed to ensure excellent stability when working on it.
- Table frame that ensures excellent stability when working on its 50 mm height worktop front, with rounded edges.
- Solid and sturdy structure.
- The cross bracing at the bottom increases the stability of the table, keeping available all the space below the worktop for placing waste bin or other auxiliary furniture.
- From 2100 mm long tables have 6 legs.
- Stainless steel legs with adjustable working height.
- As optional overshelves in neutral, with light or with light and heat are available



### Dimensions



### 600 MM ASSEMBLED

Length (mm)	Model	Reference
600	WT-66 B	19019438
700	WT-76 B	19019439
800	WT-86 B	19019440
900	WT-96 B	19019441
1000	WT-106 B	19019442
1100	WT-116 B	19019443
1200	WT-126 B	19019444
1300	WT-136 B	19019445
1400	WT-146 B	19019446
1500	WT-156 B	19019447
1600	WT-166 B	19019448
1700	WT-176 B	19019449
1800	WT-186 B	19019450
1900	WT-196 B	19019451
2000	WT-206 B	19019452
2100 *	WT-216 B	19019453
2200 *	WT-226 B	19019454
2300 *	WT-236 B	19019455
2400 *	WT-246 B	19019456
2500 *	WT-256 B	19019457
2600 *	WT-266 B	19019458
2700 *	WT-276 B	19019459
2800 *	WT-286 B	19019460

### 700 MM ASSEMBLED

Length (mm)	Model	Reference
600	WT-67 B	19019461
700	WT-77 B	19019462
800	WT-87 B	19019463
900	WT-97 B	19019464
1000	WT-107 B	19019465
1100	WT-117 B	19019466
1200	WT-127 B	19019467
1300	WT-137 B	19019468
1400	WT-147 B	19019469
1500	WT-157 B	19019470
1600	WT-167 B	19019471
1700	WT-177 B	19019472
1800	WT-187 B	19019473
1900	WT-197 B	19019474
2000	WT-207 B	19019475
2100 *	WT-217 B	19019476
2200 *	WT-227 B	19019477
2300 *	WT-237 B	19019478
2400 *	WT-247 B	19019479
2500 *	WT-257 B	19019480
2600 *	WT-267 B	19019481
2700 *	WT-277 B	19019482
2800 *	WT-287 B	19019483

\*Tables supplied with 6 legs

\*Tables supplied with 6 legs

### ACCESORIES FOR TABLES



Neutral overshelves  
300 or 400 mm width  
Pages 178-179



Overshelves with light and heat  
300 or 400 mm width  
Pages 178-179



## Work tables

### Wall work tables enclosed with intermediate shelf

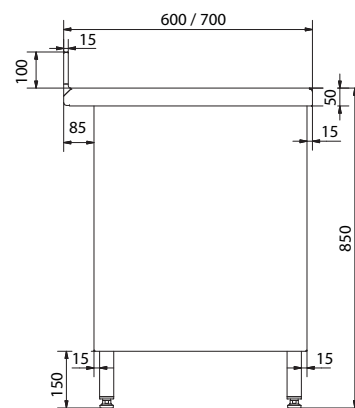
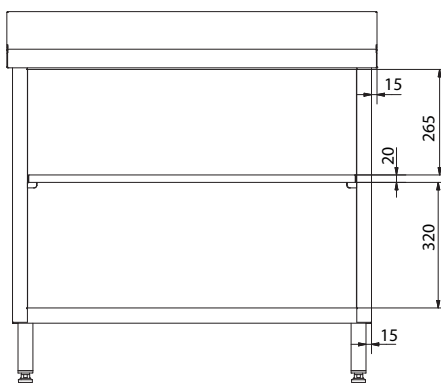


WM-146

#### WALL TABLES ENCLOSED WITH INTERMEDIATE SHELF

- Enclosed structure, welded.
- Made of stainless steel, shiny finishing completely assembled.
- 100 x 15 mm backsplash protection, fully welded and with rounded edges.
- Table frame that ensures excellent stability when working on its. 50 mm height worktop front, with rounded edges.
- Intermediate flat undershelf with a folded front, adjustable in height and with longitudinal stainless-steel reinforcement at the bottom.

#### Dimensions



#### 600 MM ENCLOSED

Length (mm)	Model	Reference
600	WM-66	19019484
700	WM-76	19019485
800	WM-86	19019486
900	WM-96	19019487
1000	WM-106	19019488
1100	WM-116	19019489
1200	WM-126	19019490
1300	WM-136	19019491
1400	WM-146	19019492
1500	WM-156	19019493
1600	WM-166	19019494

#### 700 MM ENCLOSED

Length (mm)	Model	Reference
600	WM-67	19019495
700	WM-77	19019496
800	WM-87	19019497
900	WM-97	19019498
1000	WM-107	19019499
1100	WM-117	19019500
1200	WM-127	19019501
1300	WM-137	19019502
1400	WM-147	19019503
1500	WM-157	19019504
1600	WM-167	19019505



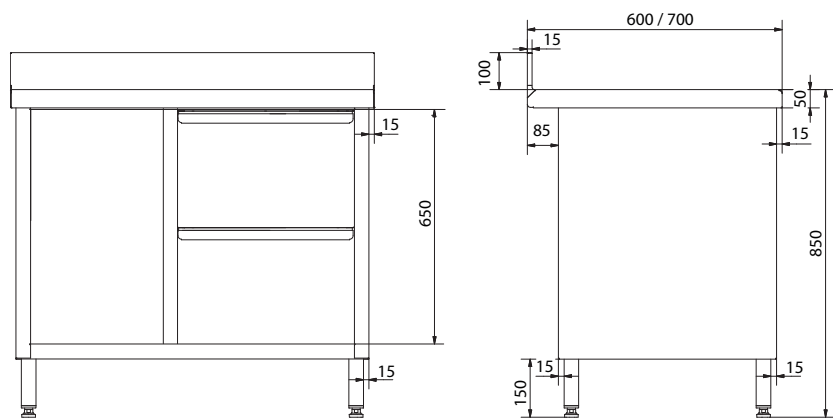


WM-126 2DR

## WALL WORK TABLES WITH TWO DRAWERS

- Enclosed structure, welded.
- Made of stainless steel, shiny finishing completely assembled.
- Table frame that ensures excellent stability when working on its. 50 mm height worktop front, with rounded edges.
- Intermediate flat undershelf with a folded front, adjustable in height and with a longitudinal stainless-steel reinforcement at the bottom.
- 100 x 15 mm backsplash protection, fully welded and with rounded edges.

## Dimensions



## 600 MM TABLE WITH DRAWERS

Length (mm)	Model	Reference
1000	WM-106 2DR	19019506
1100	WM-116 2DR	19019507
1200	WM-126 2DR	19019508
1300	WM-136 2DR	19019509
1400	WM-146 2DR	19019510
1500	WM-156 2DR	19019511
1600	WM-166 2DR	19019512
1700	WM-176 2DR	19019513
1800	WM-186 2DR	19019514
1900	WM-196 2DR	19019515
2000	WM-206 2DR	19019516

## 700 MM TABLE WITH DRAWERS

Length (mm)	Model	Reference
1000	WM-107 2DR	19019517
1100	WM-117 2DR	19019518
1200	WM-127 2DR	19019519
1300	WM-137 2DR	19019520
1400	WM-147 2DR	19019521
1500	WM-157 2DR	19019522
1600	WM-167 2DR	19019523
1700	WM-177 2DR	19019524
1800	WM-187 2DR	19019525
1900	WM-197 2DR	19019526
2000	WM-207 2DR	19019527



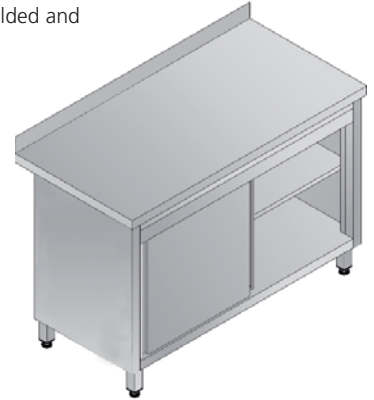
## Work tables Wall work tables with doors



WM-126 SD

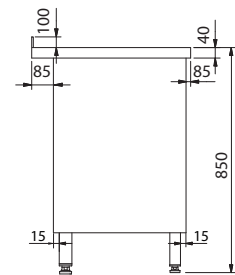
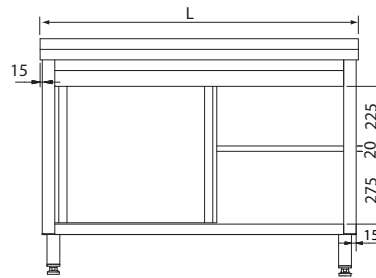
### WALL WORK TABLES WITH DOORS

- Enclosed structure, welded, with sliding doors.
- Longitudinal stainless-steel reinforcement at the bottom of the worktop. Table frame that ensures excellent stability when working on it. 50 mm height worktop front, with rounded edges.
- Sliding door system with upper roller and bottom guide track under the shelf. Easy to clean, prevents waste and dirt build-up. Door locking device included.
- Intermediate flat undershelf with a folded front, adjustable in height and with a longitudinal stainless-steel reinforcement at the bottom.
- Made of stainless steel, shiny finishing.
- 100 x 15 mm backsplash protection, fully welded and with rounded edges.
- 40 x 40 mm stainless steel tubular legs, with adjustable working height.
- Sliding doors or handing doors made of stainless steel, with integrated full-length handle running the entire height of the door for easy access.



WM-126 HD

### Dimensions



### 600 MM TABLE WITH DOORS

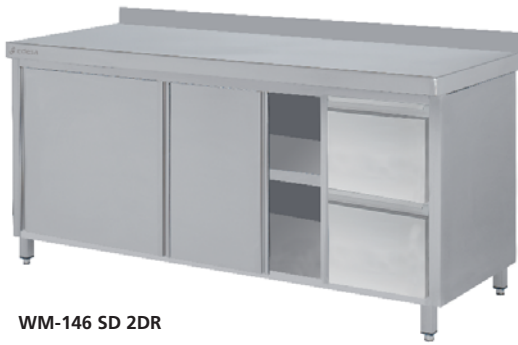
Length (mm)	Model	Reference	Type of doors
400	WM-46 HD	19019528	Hinged door
600	WM-66 HD	19019529	Hinged door
800	WM-86 SD	19019530	Sliding door
800	WM-86 HD	19019531	Hinged door
900	WM-96 SD	19019532	Sliding door
1000	WM-106 SD	19019533	Sliding door
1100	WM-116 SD	19019534	Sliding door
1200	WM-126 SD	19019535	Sliding door
1200	WM-126 HD	19019536	Hinged door
1300	WM-136 SD	19019537	Sliding door
1400	WM-146 SD	19019538	Sliding door
1500	WM-156 SD	19019539	Sliding door
1600	WM-166 SD	19019540	Sliding door
1700	WM-176 SD	19019541	Sliding door
1800	WM-186 SD	19019542	Sliding door
1900	WM-196 SD	19019543	Sliding door
2000	WM-206 SD	19019544	Sliding door
2400	WM-246 SD	19019545	Sliding door

### 700 MM TABLE WITH DOORS

Length (mm)	Model	Reference	Type of doors
400	WM-47 HD	19019546	Hinged door
600	WM-67 HD	19019547	Hinged door
800	WM-87 SD	19019548	Sliding door
800	WM-87 HD	19019549	Sliding door
900	WM-97 SD	19019550	Sliding door
1000	WM-107 SD	19019551	Sliding door
1100	WM-117 SD	19019552	Sliding door
1200	WM-127 SD	19019553	Sliding door
1200	WM-127 HD	19019554	Hinged door
1300	WM-137 SD	19019555	Sliding door
1400	WM-147 SD	19019556	Sliding door
1500	WM-157 SD	19019557	Sliding door
1600	WM-167 SD	19019558	Sliding door
1700	WM-177 SD	19019559	Sliding door
1800	WM-187 SD	19019560	Sliding door
1900	WM-197 SD	19019561	Sliding door
2000	WM-207 SD	19019562	Sliding door
2400	WM-247 SD	19019563	Sliding door



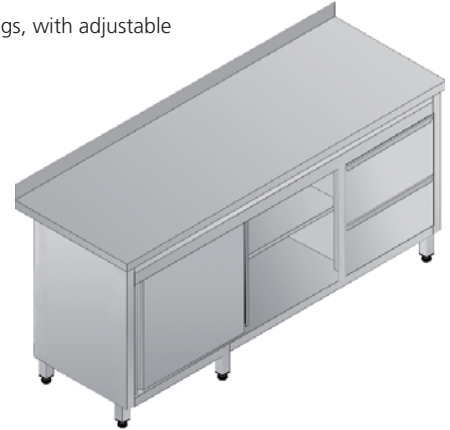
## Wall work tables with doors and two drawers



WM-146 SD 2DR

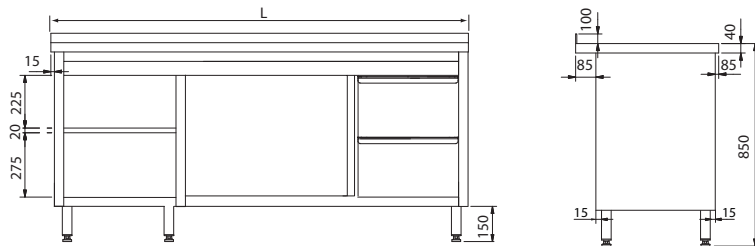
### WALL WORK TABLES WITH DOORS AND TWO DRAWERS

- Enclosed structure, welded.
- Longitudinal stainless-steel reinforcement at the bottom of the worktop. Table frame that ensures excellent stability when working on it. 50 mm height worktop front, with rounded edges.
- Intermediate flat undershelf with a folded front, adjustable in height and with a longitudinal stainless-steel reinforcement at the bottom.
- Made of stainless steel, shiny finishing.
- 100 x 15 mm backsplash protection, fully welded and with rounded edges.
- 40 x 40 mm stainless steel tubular legs, with adjustable working height.



WM-86 HD 2DR

### Dimensions



### 600 MM TABLE WITH DOORS AND DRAWERS

Length (mm)	Model	Reference	Type of doors
800	WM-86 HD 2DR	19019564	Hinged door
1400	WM-146 SD 2DR	19019565	Sliding door
1500	WM-156 SD 2DR	19019566	Sliding door
1600	WM-166 SD 2DR	19019567	Sliding door
1700	WM-176 SD 2DR	19019568	Sliding door
1800	WM-186 SD 2DR	19019569	Sliding door
1900	WM-196 SD 2DR	19019570	Sliding door
2000	WM-206 SD 2DR	19019571	Sliding door

### 700 MM TABLE WITH DOORS AND DRAWERS

Length (mm)	Model	Reference	Type of doors
800	WM-87 HD 2DR	19019572	Hinged door
1400	WM-147 SD 2DR	19019573	Sliding door
1500	WM-157 SD 2DR	19019574	Sliding door
1600	WM-167 SD 2DR	19019575	Sliding door
1700	WM-177 SD 2DR	19019576	Sliding door
1800	WM-187 SD 2DR	19019577	Sliding door
1900	WM-197 SD 2DR	19019578	Sliding door
2000	WM-207 SD 2DR	19019579	Sliding door

## ACCESORIES FOR TABLES



Neutral overshelves  
300 or 400 mm width  
Page 178-179



Overshelves with light and heat  
300 or 400 mm width  
Page 178-179



## Work tables

### Wall work tables and Wall-hung work tables

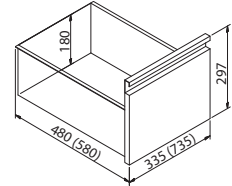
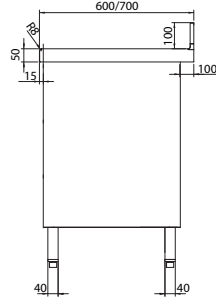


WM-46 2D

#### WALL WORK TABLES WITH 2 DRAWERS

- Table with two (2) drawers, integrated in the structure.
- Made of stainless steel.

Length (mm)	Model	Reference
400 x 600	WM-46 2D	19019580
600 x 600	WM-66 2D	19019581
400 x 700	WM-47 2D	19019582
600 x 700	WM-67 2D	19019583



WM-46 BH

#### WALL WORK TABLES WITH WASTE BIN

- Made of stainless steel
- Easy to clean.

Length (mm)	Model	Reference
400 x 600	WM-46 BH	19019584
600 x 600	WM-47 BH	19019585



WTH-146

#### WALL-HUNG WORK TABLES

- Made of stainless steel, shiny finishing.
- 60 mm height worktop front, with rounded edges.
- 100 x 15 mm backplash protection, fully welded and with rounded edges.
- The ideal solution for installations which make full use of available space.
- Easy to clean.

#### 600 MM HUNG TABLES

Length (mm)	Model	Reference
600	WTH-66	19019586
800	WTH-86	19019587
1000	WTH-106	19019588
1200	WTH-126	19019589
1400	WTH-146	19019590
1600	WTH-166	19019591
1800	WTH-186	19019592
2000	WTH-206	19019593

#### 700 MM HUNG TABLES

Length (mm)	Model	Reference
600	WTH-67	19019594
800	WTH-87	19019595
1000	WTH-107	19019596
1200	WTH-127	19019597
1400	WTH-147	19019598
1600	WTH-167	19019599
1800	WTH-187	19019600
2000	WTH-207	19019601



WTA-77

### CORNER WORK TABLES

- Adjustable to corners in a 90° angle, to create a continuous work environment of Edesa tables and sinks.
- Two (2) models: 600 x 600 mm model to be used with work tables and sinks of 600 mm. 700 x 700 mm model to be integrated with the 700 mm ranges.
- Made of stainless steel, shiny finishing.
- 50 mm height worktop front, with rounded edges.
- 100 x 15 mm backsplash protection, fully welded and with rounded edges.
- Solid and sturdy structure.
- Stainless steel legs, with adjustable working height.
- Lower undershelf included.

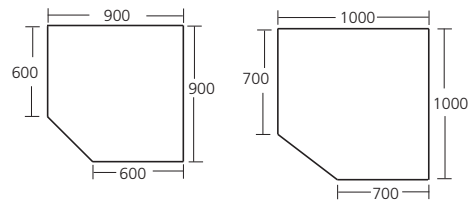
Length (mm)	Model	Reference
600 x 600	WTA-66	19019602
700 x 700	WTA-77	19019603



WMA-107

### CORNER 90° WORK TABLES WITH DOORS

- Designed to optimize space in the kitchen corners, while maintaining work table and sink homogeneity.
- Made of stainless steel, shiny finishing.
- 100 x 15 mm backsplash protection, fully welded and with rounded edges.
- Two (2) models: 600 mm and 700 mm depth.
- Full-length handle running the entire height of the door.
- Doors come with spring hinge.
- Legs with adjustable working height.



MMA-106

MMA-107

Dimensions (mm)	Model	Reference
600 x 600 x 850	WMA-106	19019604
700 x 700 x 850	WMA-107	19019605



WTHA-77

### WALL-HUNG CORNER WORK TABLES

- Adjustable to corners in a 90° angle, to create a continuous work environment of Edesa tables and sinks.
- Two (2) models: 600 x 600 mm model to be used with work tables and sinks of 600 mm. 700 x 700 mm model to be integrated with the 700 mm ranges.
- Made of stainless steel, shiny finishing.
- 50 mm height worktop front, with rounded edges.
- 100 x 15 mm backsplash protection, fully welded and with rounded edges.
- The ideal solution for installations which make full use of available space.
- Easy to clean.

Dimensions (mm)	Model	Reference
600 x 600	WTHA-66	19019606
700 x 700	WTHA-76	19019607



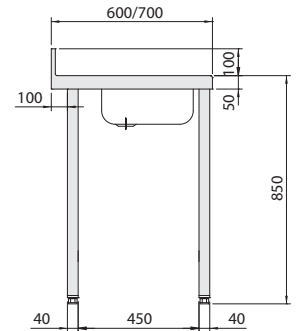
## Work tables Wall work tables with sink.



WTS-146/11 L B

### WALL WORK TABLES WITH SINK

- Made of stainless steel, hygienic and shiny finishing.
- Crossbracing section included as a reinforcement on the rear side.
- Wall work tables with sink are supplied assembled.
- 50 mm work top with soundproof reinforcement, rounded edges, and 100 mm backsplash protection.
- Stainless steel legs with adjustable working height.



### 600 MM WITHOUT UNDERSHELF

Length (mm)	Model	Reference
600	WTS-66/11 L B	19019608
700	WTS-76/11 L B	19019609
800	WTS-86/11 L B	19019610
900	WTS-96/11 L B	19019611
1000	WTS-106/11 L B	19019612
1100	WTS-116/11 L B	19019613
1200	WTS-126/11 L B	19019614
1300	WTS-136/11 L B	19019615
1400	WTS-146/11 L B	19019616
1500	WTS-156/11 L B	19019617
1600	WTS-166/11 L B	19019618
1700	WTS-176/11 L B	19019619
1800	WTS-186/11 L B	19019620

### 700 MM WITHOUT UNDERSHELF

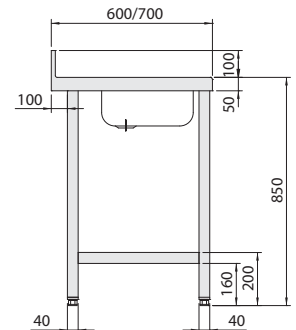
Length (mm)	Model	Reference
600	WTS-67/11 L B	19019621
700	WTS-77/11 L B	19019622
800	WTS-87/11 L B	19019623
900	WTS-97/11 L B	19019624
1000	WTS-107/11 L B	19019625
1100	WTS-117/11 L B	19019626
1200	WTS-127/11 L B	19019627
1300	WTS-137/11 L B	19019628
1400	WTS-147/11 L B	19019629
1500	WTS-157/11 L B	19019630
1600	WTS-167/11 L B	19019631
1700	WTS-177/11 L B	19019632
1800	WTS-187/11 L B	19019633



WTS-156/11 L S

### WALL WORK TABLES WITH UNDERSHELF AND SINK

- Made of stainless steel, hygienic and shiny finishing.
- Undershelf included.
- Wall work tables with sink are supplied assembled.
- 50 mm work top with soundproof reinforcement, rounded edges, and 100 mm backsplash protection.
- Stainless steel legs with adjustable working height.



### 600 MM WITH UNDERSHELF

Length (mm)	Model	Reference
600	WTS-66/11 L S	19019634
700	WTS-76/11 L S	19019635
800	WTS-86/11 L S	19019636
900	WTS-96/11 L S	19019637
1000	WTS-106/11 L S	19019638
1100	WTS-116/11 L S	19019639
1200	WTS-126/11 L S	19019640
1300	WTS-136/11 L S	19019641
1400	WTS-146/11 L S	19019642
1500	WTS-156/11 L S	19019643
1600	WTS-166/11 L S	19019644
1700	WTS-176/11 L S	19019645
1800	WTS-186/11 L S	19019646
1900	WTS-196/11 L S	19019647
2000	WTS-206/11 L S	19019648

### 700 MM WITH UNDERSHELF

Length (mm)	Model	Reference
600	WTS-67/11 L S	19019649
700	WTS-77/11 L S	19019650
800	WTS-87/11 L S	19019651
900	WTS-97/11 L S	19019652
1000	WTS-107/11 L S	19019653
1100	WTS-117/11 L S	19019654
1200	WTS-127/11 L S	19019655
1300	WTS-137/11 L S	19019656
1400	WTS-147/11 L S	19019657
1500	WTS-157/11 L S	19019658
1600	WTS-167/11 L S	19019659
1700	WTS-177/11 L S	19019660
1800	WTS-187/11 L S	19019661
1900	WTS-197/11 L S	19019662
2000	WTS-207/11 L S	19019663



### PREPARATION TABLES FOR VEGETABLES, MEAT AND FISH

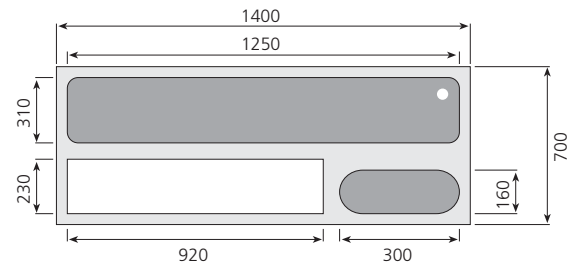
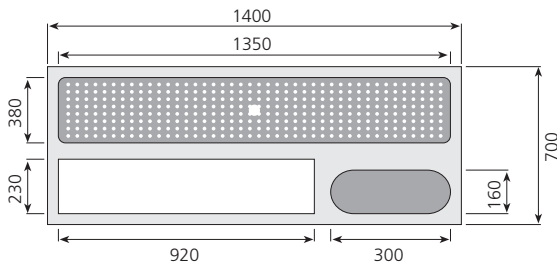
- Specially designed for the preparation of fresh foods.
- All I models include a polyethylene cutting board 20 mm thick and a waste disposal hole.
- The vegetable table (MPVM) includes a bowl with drain and overflow.
- The meat and fish table (MPCM-147) incorporates a stamped bowl of 1250 x 310 x 20 mm with 1/2" drain with a perforated cover.
- Tables manufactured in stainless steel with height-adjustable stainless legs
- Worktop and stand are assembled by weld.



WTM-187



WTV-187



Length (mm)	Model	Reference
1200	WTM-127	19019664
1800	WTM-187	19019665
1200	WTV-127	19019666
1800	WTV-187	19019667



## HOT TABLES

- Hot tables are essential elements to keep the foodservice hot chain without altering food nutritional properties and taste.
- Made in stainless steel with satin finish and insulated double door.
- Injected double doors, that provide robustness to the structure, with high-density insulation to ensure energy savings and accurate, stable inside temperature.
- Operating temperature ranges from 30°C to 85°C
- Top could be easily disassembled.
- For other available options in different sizes and options, please contact your Edesa Professional sales representative.

Excellent heat distribution

Top bottom reinforced and insulated with great robustness

Intuitive digital control panel, with a sleek design, provides an accurate reading of the temperature inside the table.

Specially designed perforated intermediate shelf to avoid heat concentration in the upper part of the table and keep a uniform temperature inside.



Ergonomic handle over the full length of the door to make daily operations easier.

Exterior sliding doors avoid dirt build-up and ensure maximum hygiene.



## FEATURES AND CONSTRUCTIVE DETAILS



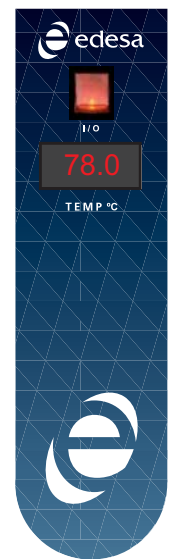
Resistor-fan system enables a fast heating up and produces an efficient air circulation inside the table.



Intermediate shelf is height-adjustable, without any tools required.



Easy-to-service intelligent design: All functional elements could be maintained from a specific removable module. Control panel with digital thermostat.



Homogeneous hot air distribution  
Ventilated Heat





WHM-167

### WALL-MOUNTED HOT TABLES

- Manufactured in stainless steel, inside and outside.
- Forced air distribution system.
- For a better heat distribution, 1,800 mm tables have resistors and fans at each side.
- Two (2) sliding doors.
- Wall-mounted tables with 100mm backsplash fully welded.
- Intermediate shelf is included.

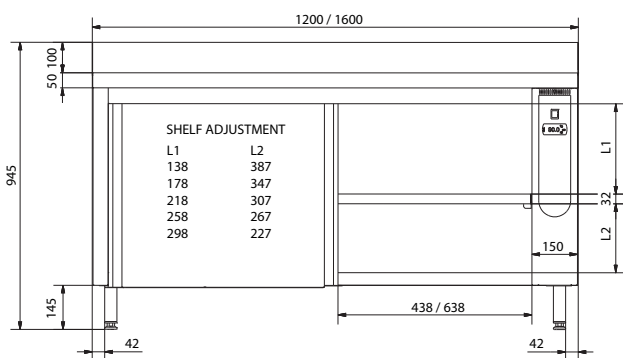


CHM-167-2SD

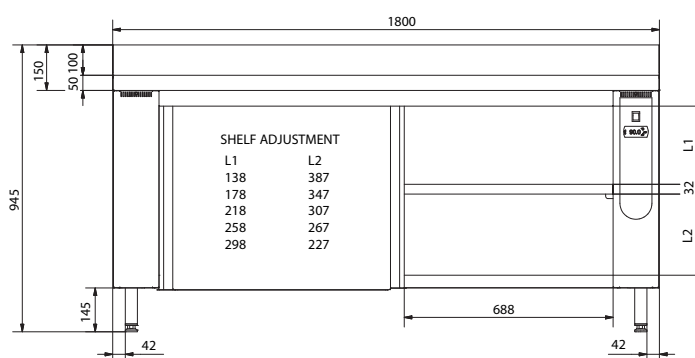
### PASS-THROUGH HOT TABLES

- Manufactured in stainless steel, inside and outside.
- Forced air distribution system.
- For a better heat distribution, 1,800 mm tables have resistors and fans at each side.
- Two (2) sliding doors at each side.
- Intermediate shelf is included.

### DIMENSIONS



Sizes for models 127 y 167.



Sizes for model 187.

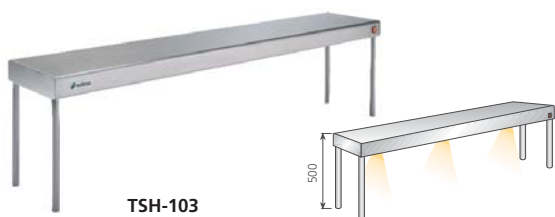
Model	Reference	External dimensions (mm)	Type	Power (W)	Voltage (V)
WHM-127	19022291	1200 x 700 x 850	Wall	2050	230/1/N
WHM-167	19022295	1600 x 700 x 850	Wall	2050	230/1/N
WHM-187	19022297	1800 x 700 x 850	Wall	3500	230/1/N
CHM-127-2SD	19022414	1200 x 700 x 850	Central pass-through	2050	230/1/N
CHM-167-2SD	19022416	1600 x 700 x 850	Central pass-through	2050	230/1/N
CHM-187-2SD	19022417	1800 x 700 x 850	Central pass-through	3500	230/1/N



## Overshelves with light and heat

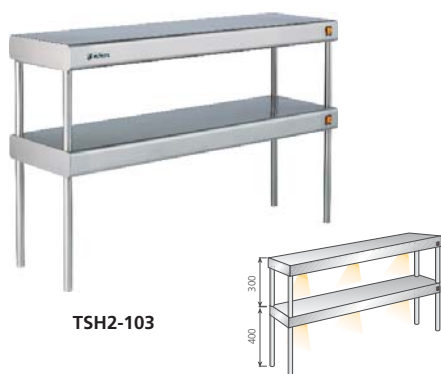
### OVERSHELVES WITH LIGHT AND HEAT

- Halogen lamps to illuminate kitchen work areas and keep food hot before serving it.
- Made of stainless steel.
- Easy to install by making small holes on the table where the joint brackets will be installed.
- Suitable for assembling to any kind of tables.



### 1 OVERSHELF

Length (mm)	Model	Reference
1000 x 300	TSH-103	19019668
1200 x 300	TSH-123	19019669
1400 x 300	TSH-143	19019670
1600 x 300	TSH-163	19019671
1800 x 300	TSH-183	19019672
2000 x 300	TSH-203	19019673
2200 x 300	TSH-223	19019674
1000 x 300	TSH-104	19019675
1200 x 300	TSH-124	19019676
1400 x 300	TSH-144	19019677
1600 x 300	TSH-164	19019678
1800 x 300	TSH-184	19019679
2000 x 300	TSH-204	19019680
2200 x 300	TSH-224	19019681



### 2 OVERSHELVES

Length (mm)	Model	Reference
100 x 400	TSH2-103	19019682
1200 x 400	TSH2-123	19019683
1400 x 400	TSH2-143	19019684
1600 x 400	TSH2-163	19019685
1800 x 400	TSH2-183	19019686
2000 x 400	TSH2-203	19019687
2200 x 400	TSH2-223	19019688
1000 x 400	TSH2-104	19019689
1200 x 400	TSH2-124	19019690
1400 x 400	TSH2-144	19019691
1600 x 400	TSH2-164	19019692
1800 x 400	TSH2-184	19019693
2000 x 400	TSH2-204	19019694
2200 x 400	TSH2-224	19019695



**NEUTRAL OVERSHELVES**

- Element to make easier the preparation and distribution of meals.
- Made of stainless steel.
- Easy to install by making small holes on the table where the joint brackets will be installed.
- Suitable for assembling to any kind of tables.



TS-103



TS2-113

**1 OVERSHELF**



Length (mm)	Model	Reference
600 x 300	TS-63	19019696
700 x 300	TS-73	19019697
800 x 300	TS-83	19019698
900 x 300	TS-93	19019699
1000 x 300	TS-103	19019700
1100 x 300	TS-113	19019701
1200 x 300	TS-123	19019702
1300 x 300	TS-133	19019703
1400 x 300	TS-143	19019704
1500 x 300	TS-153	19019705
1600 x 300	TS-163	19019706
1700 x 300	TS-173	19019707
1800 x 300	TS-183	19019708
1900 x 300	TS-193	19019709
2000 x 300	TS-203	19019710
600 x 400	TS-64	19019711
700 x 400	TS-74	19019712
800 x 400	TS-84	19019713
900 x 400	TS-94	19019714
1000 x 400	TS-104	19019715
1100 x 400	TS-114	19019716
1200 x 400	TS-124	19019717
1300 x 400	TS-134	19019718
1400 x 400	TS-144	19019719
1500 x 400	TS-154	19019720
1600 x 400	TS-164	19019721
1700 x 400	TS-174	19019722
1800 x 400	TS-184	19019723
1900 x 400	TS-194	19019724
2000 x 400	TS-204	19019725

**2 OVERSHELVES**



Length (mm)	Model	Reference
600 x 300	TS2-63	19019726
700 x 300	TS2-73	19019727
800 x 300	TS2-83	19019728
900 x 300	TS2-93	19019729
1000 x 300	TS2-103	19019730
1100 x 300	TS2-113	19019731
1200 x 300	TS2-123	19019732
1300 x 300	TS2-133	19019733
1400 x 300	TS2-143	19019734
1500 x 300	TS2-153	19019735
1600 x 300	TS2-163	19019736
1700 x 300	TS2-173	19019737
1800 x 300	TS2-183	19019738
1900 x 300	TS2-193	19019739
2000 x 300	TS2-203	19019740
600 x 400	TS2-64	19019741
700 x 400	TS2-74	19019742
800 x 400	TS2-84	19019743
900 x 400	TS2-94	19019744
1000 x 400	TS2-104	19019745
1100 x 400	TS2-114	19019746
1200 x 400	TS2-124	19019747
1300 x 400	TS2-134	19019748
1400 x 400	TS2-144	19019749
1500 x 400	TS2-154	19019750
1600 x 400	TS2-164	19019751
1700 x 400	TS2-174	19019752
1800 x 400	TS2-184	19019753
1900 x 400	TS2-194	19019754
2000 x 400	TS2-204	19019755